

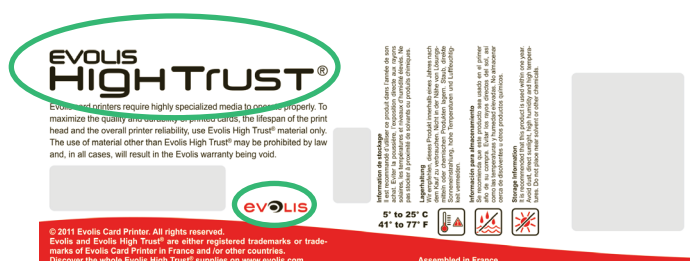


HOW TO RECOGNIZE AN ORIGINAL EVOLIS HIGH TRUST® CONSUMABLE

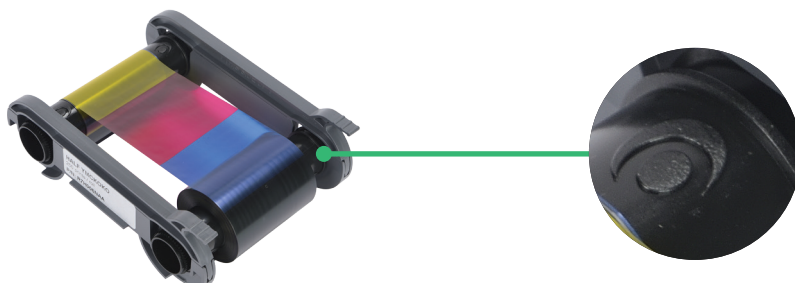
Hereafter is a description of the several points to check depending on your ribbons.

RIBBONS PLACED IN CASSETTE (for Primacy/Zenius printers):

- Check the **Evolis High Trust®** and **Evolis logos** on the label.



- We placed two 'O' from the **Evolis logo** on each plastic ribbon core.



- When installing the ribbon in your card printer, it is instantly detected and can be checked through the Print Center on your computer. If it is not an Evolis original ribbon, the message '**Unknown ribbon**' will be displayed.

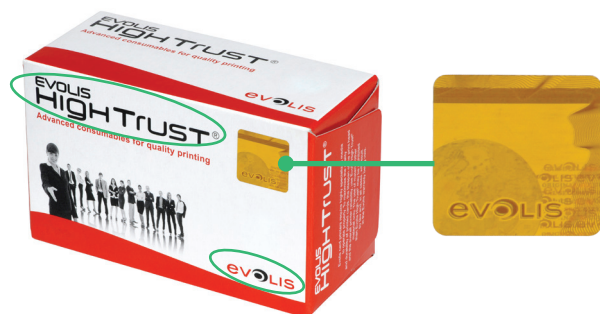
RIBBONS W/O CASSETTE EASY4PRO N5F008xxx, N5H004NAA, N6F003xxx, N7H006NAA, NCT023NAA, N2F010NAA (for Primacy printers):



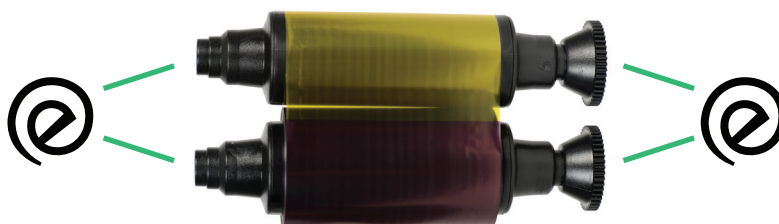
- We placed two 'O' from the **Evolis logo** on each plastic ribbon core.
- When installing the ribbon in your card printer, it is instantly detected and can be checked through the Print Center on your computer. If it is not an Evolis original ribbon, the message '**Unknown ribbon**' will be displayed.

RIBBONS WITH PART NUMBERS R3012, R3011, R3511, R3411, R3013, R3314, R3514, IN INDIVIDUAL BOXES
(for Tattoo/Pebble/Dualys/Securion/Quantum printers):

- Check the Evolis High Trust® and Evolis logos on the box.
- We placed a **holographic sticker** on the ribbon box, with several security features, such as a rainbow color fine lines guilloche design, nano text, two channel images...
- We also integrated a unique feature: **the floating image**. To check the authenticity of your ribbon, you just have to pass the sticker under a standard light and the 'O' from the Evolis logo will appear.



- On each side of the ribbon cores, check the logo



MONOCHROME RIBBONS WITH PART NUMBERS R2011, R2211, R2131, R2121 IN SEALED PLASTIC BAG
(for Tattoo/Pebble/Dualys/Securion/Quantum printers):

- Check the Evolis High Trust® and the Evolis logos on the label.
- On each side of the ribbon cores, check the logo

