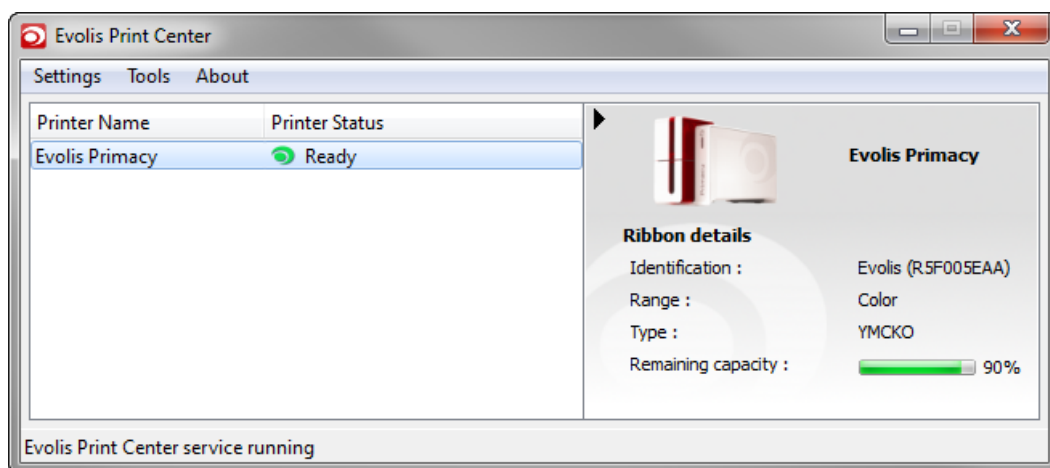


EVOLIS Premium Suite®




PRINT CENTER MANUAL

Using the Print Center with an Evolis Printer

Document History

Initialization

Written by:	
Approved by:	A. PUEL
Date:	

Update chart

Version	Description	Date
A0	Creation	2013-01-10

Table of contents

1 - Introduction	5
1.1 Introduction	5
1.2 General remarks.....	5
1.3 List of icons.....	5
2 - Evolis Print center.....	6
2.1 Discover the interface	6
2.2 Menu bar description.....	7
2.2.1 Settings.....	7
2.2.2 Tools	7
2.2.3 About	8
3 - Printer properties	9
3.1 Access to the Printer properties	9
3.2 Printing	10
3.2.1 Card orientation	10
3.2.2 Feeder / Hopper.....	11
3.2.3 Ribbon	12
3.2.4 Front side graphical settings.....	13
3.2.5 Back side graphical settings	13
3.2.6 Varnish adjustments.....	14
3.3 Encoding.....	15
3.3.1 Magnetic	15
3.4 Cleaning.....	16
3.4.1 Cleaning details	16
3.4.2 Proceed with cleaning.....	17
3.5 System details.....	18
3.5.1 Printer details.....	18
3.5.2 Ribbon details	18
3.5.3 Systems details.....	19
3.5.4 Testing cards.....	19
3.6 Maintenance	20
3.6.1 Printer commands prompting.....	20
3.6.2 Magnetic encoding prompting.....	21
3.6.3 Installable options	21
3.6.4 Print head replacement.....	22
3.6.5 Firmware update.....	22
3.7 Administration.....	23
3.7.1 Standby settings	23
3.7.2 Ethernet settings.....	24

Table of figures

Figure 1: Evolis Print center presentation	6
Figure 2: Settings menu	7
Figure 3: Tools menu	7
Figure 4: About window	8
Figure 5: Access to properties	9
Figure 6: Reset to default settings button	9
Figure 7: Card orientation	10
Figure 8: Feeder / Hopper	11
Figure 9: Ribbon	12
Figure 10: Manual settings	12
Figure 11: Front and Back side settings	12
Figure 12: Front /Back side graphical settings	13
Figure 13: Varnish adjustments	14
Figure 14: Magnetic.....	15
Figure 15: Cleaning details.....	16
Figure 16: Proceed with cleaning	17
Figure 17: Printer details	18
Figure 18: Ribbon details	18
Figure 19: Systems details	19
Figure 20: Testing cards	19
Figure 21: Printer commands prompting.....	20
Figure 22: Magnetic encoding prompting.....	21
Figure 23: Installable options.....	21
Figure 24: Print head replacement	22
Figure 25: Firmware update	22
Figure 26: Standby settings	23
Figure 27: Ethernet settings.....	24

1 - Introduction

1.1 Introduction

Evolis Premium Suite® brings together several software components with the goal to manage card personalization from end to end, while making this process simple and user friendly.

The Evolis Print Center enables to configure the system, manage printers and monitor all printing jobs.

It provides real-time monitoring of all Evolis printers on the network, which is well suited for remote administration. It is also in relation with the Printer Manager for the notifications.

The combination of the Printer Manager and the Print Center frees the user from configuration tasks since this process is automated and is specific to the type of ribbon loaded in the machine.

The Evolis Print center can managed three Evolis printers:

- Primacy
- Zenius
- Elypso

1.2 General remarks

This manual describes how to use the Evolis Print center.

The examples given are based on Windows 7 with an Evolis Primacy printer.

1.3 List of icons



Warning Sign:
Indicates an operation which require special attention.



Note:
Indicates general remarks.



No entry sign:
Identifies steps or actions strictly prohibited.



Eye:
Inspect, Check.

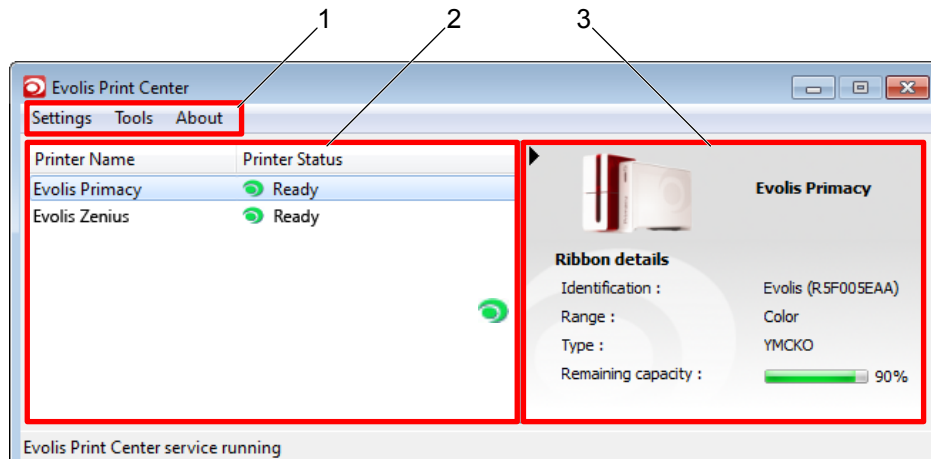
2 - Evolis Print center



As described in introduction, the Evolis Print center is used to manage several printers. For this reason, some parameters may not be available for your printer.

2.1 Discover the interface

The Evolis Print center is composed of three main parts:



1. Menu bar
2. Printer details frame
3. Ribbon details frame

Figure 1: Evolis Print center presentation

The menu bar (1) allows you to access to many parameters like the choice of language, the wizards, etc.

The printer details frame (2) gives some information about the printer :

- The name of the printer,
- The status of the printer:
 - Ready,
 - Printer off-line,
 - Printer in Standby mode,
 - No ribbon,
 - Card feed problem,
 - etc.

The Ribbon details frame (3) gives some information about the ribbon:

- Identification of the ribbon,
- Range,
- Type,
- Remaining capacity.

2.2 Menu bar description

2.2.1 Settings

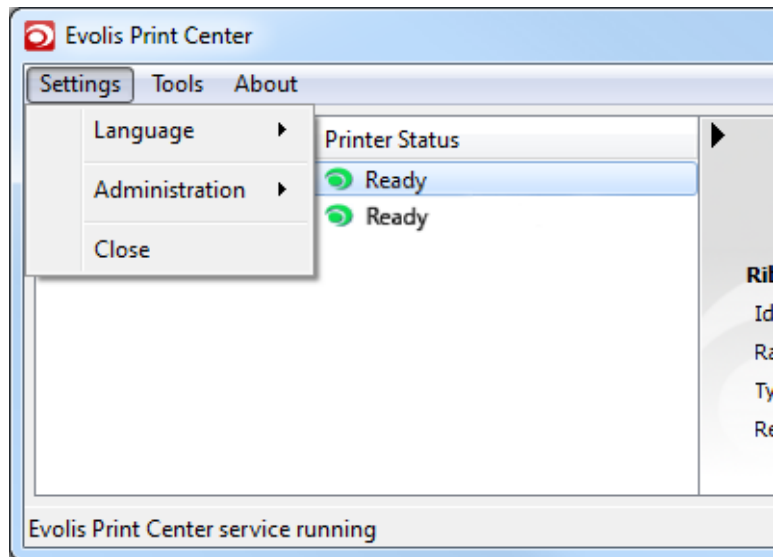


Figure 2: Settings menu

The **Language** menu allows you to select the language of the Evolis Print center, which is independent from the language of the Printer Manager/pop-up notifications.

The **Administration** menu allows you to Start or Stop the Evolis Print Center service for all the connected Evolis printers.

The **Close** button minimize the Evolis Print Center in the system tray.

2.2.2 Tools

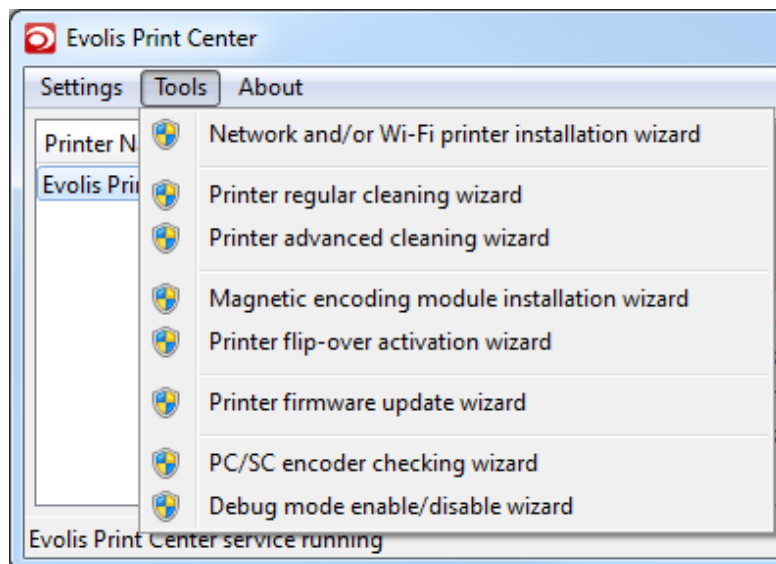


Figure 3: Tools menu

The **Tools** menu is composed of many wizards. These wizards will guide you through the completion of various operations.

1. To launch a wizard, click on Tools, then on the desired wizard.
2. Follow the instructions of the wizard.



The Tools file can be also found in the Windows Programs list.

Here is a list of the different wizards that can be launched by the Evolis Print center:

- Network and/or Wi-Fi printer installation wizard
This wizard allows you to install a network and/or a Wi-Fi printer.
- Printer regular cleaning wizard
This wizard allows you to clean your printer using an Evolis High Trust adhesive cleaning card.
- Printer advanced cleaning wizard
This wizard allows you to clean your printer with advanced parameters using an Evolis High Trust T shaped cleaning card and an adhesive cleaning card.
- Magnetic encoding module installation wizard
This wizard allows you to install and adjust a magnetic encoder in your printer.
- Printer flip-over activation wizard
This wizard allows you to activate a flip-over module in your printer. You will be allowed to upgrade your single-sided printer to a double-sided printer.
- Printer firmware update wizard
This wizard allows you to update the firmware of the printer.
- PS/SC encoder checking wizard
This wizard allows you to carry out a basic check on the operation of a PC/SC encoder in your printer by reading the ATR code.
- Debug mode enable/disable wizard
This wizard allows you to enable/disable the debug mode in which each event from Evolis Premium Suite (EPS) will be transferred to a debugging program which must already have been installed on your PC. It should be used only in advanced support cases.
These events will be stored in a file to be sent to Evolis support for analysis purpose.

2.2.3 About

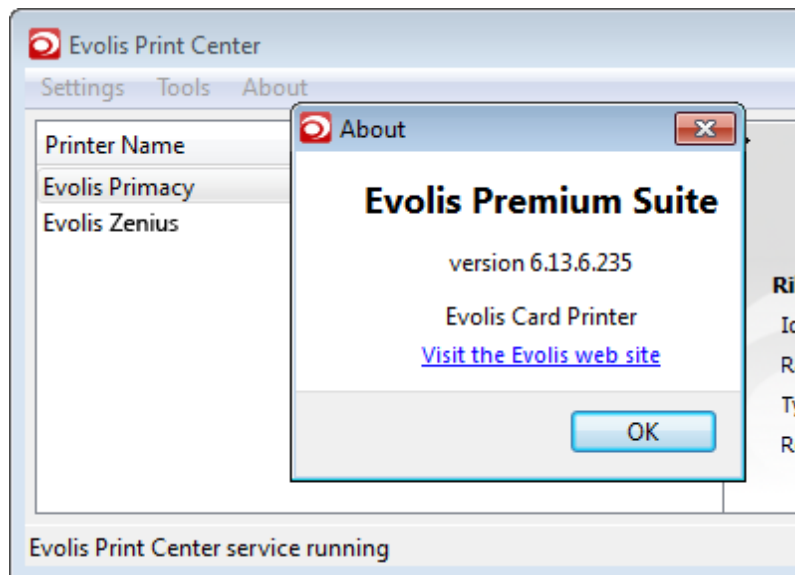


Figure 4: About window

The **About** button opens a window showing the version of the Evolis Premium Suite and a link to the Evolis website.

3 - Printer properties

3.1 Access to the Printer properties

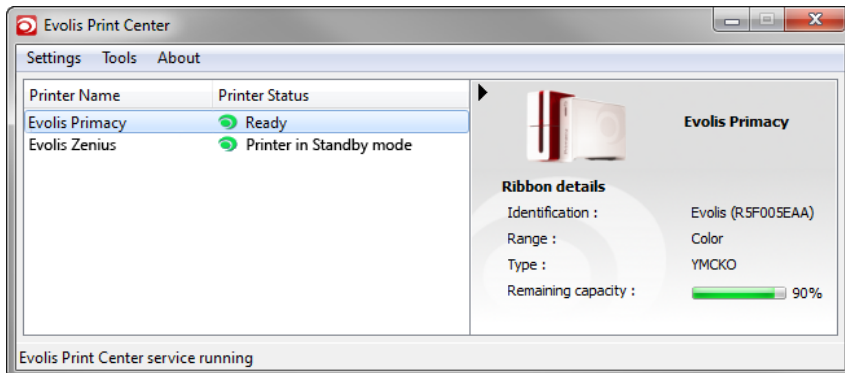


Figure 5: Access to properties

1. Open the Evolis Print center using the desktop shortcut icon.
2. Double-click on your printer or make a right-click on your printer, then select **Properties**.

The Evolis printer properties window opens. It gives access to the following settings:

- Printing,
- Encoding,
- Cleaning,
- System details,
- Maintenance,
- Administration.



Use with caution the “Reset to default settings” button located at the right bottom of the Evolis printer properties window. This button resets all settings available in the properties windows.

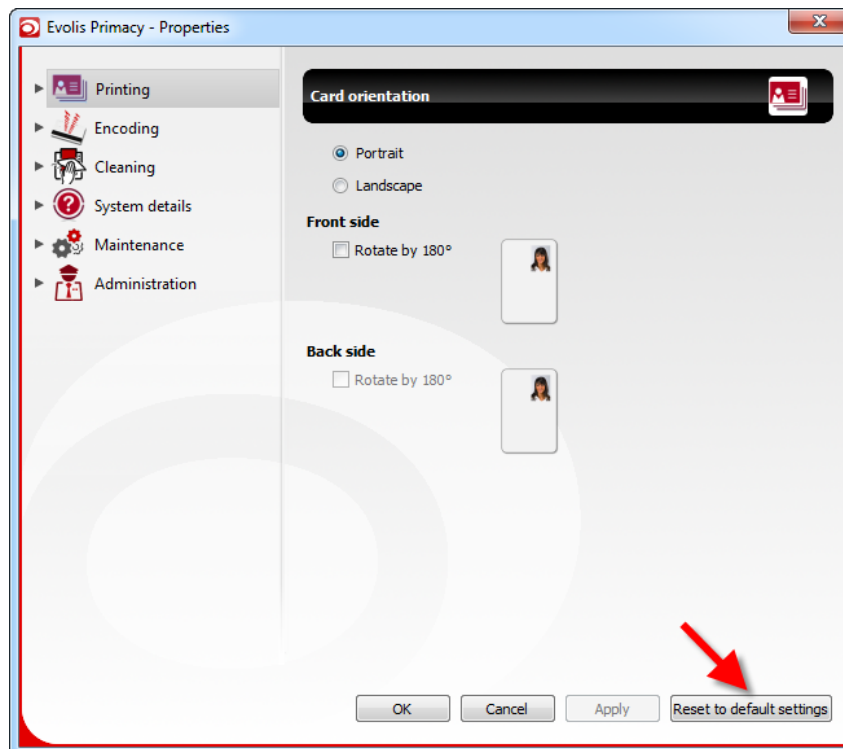


Figure 6: Reset to default settings button

3.2 Printing

3.2.1 Card orientation

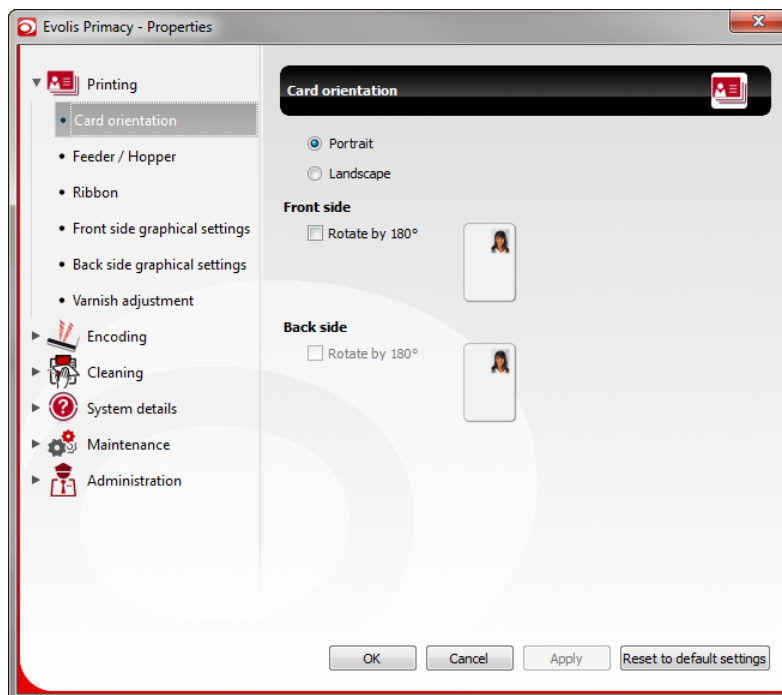


Figure 7: Card orientation

The Card Orientation menu allows you to choose:

- the orientation of printing: **Portrait** or **Landscape**,
- the position of printing (rotation by 180°).



You can choose to orientate the printing for front side or back side only or for both sides.

3.2.2 Feeder / Hopper

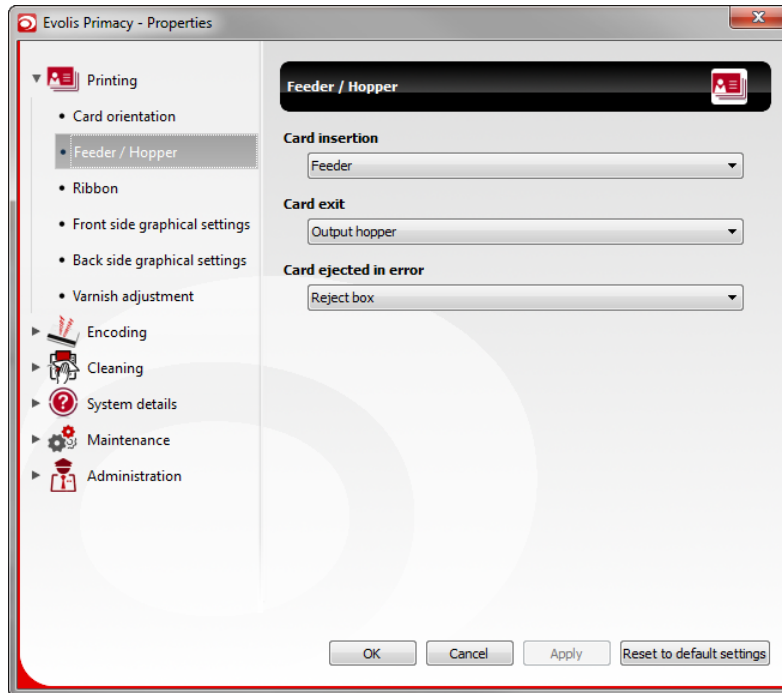


Figure 8: Feeder / Hopper

The Feeder / Hopper menu allows you to choose (depending on your printer):

- the card insertion mode:
 - **Feeder**,
 - **Manual feeding** (one by one insertion),
 - **Automatic selection** (an automatic combination of Feeder and Manual feeding modes: If the feeder contains cards, they will be inserted, if it is empty, a "Card and ribbon" LED will flash waiting for a manual insertion of a card).
- the card exit mode:
 - **Output hopper**,
 - **Reject box**,
 - **Manual reception**.
- the card ejected in error mode (encoding error, mechanical error):
 - **Reject box**,
 - **Output hopper**,
 - **Manual reception**.

3.2.3 Ribbon

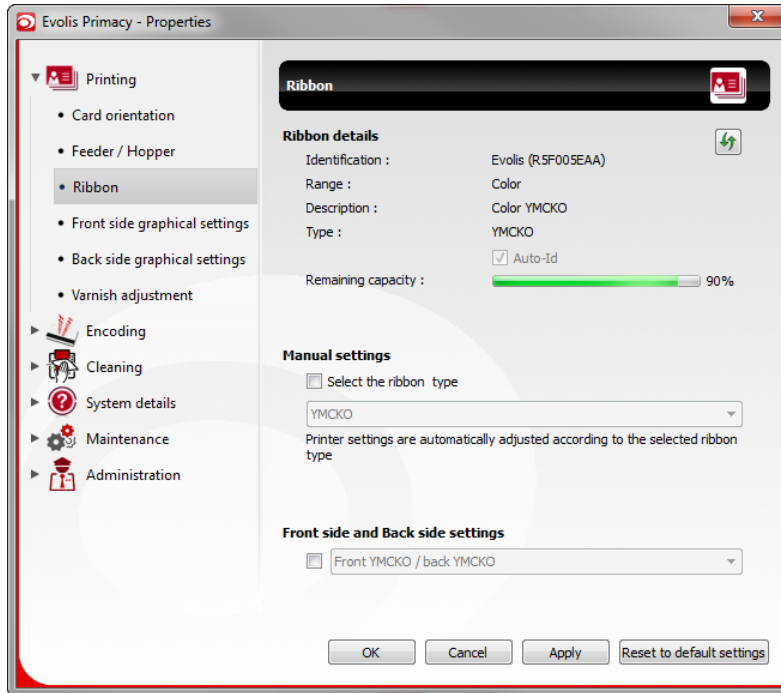


Figure 9: Ribbon

The Ribbon menu allows you to read and modify some ribbon details settings.

By default, the selection of ribbon type is set to automatic (Auto-Id checked in Ribbon details section). You can choose manually the type of ribbon by checking **Select the ribbon type** in **Manual settings** section.

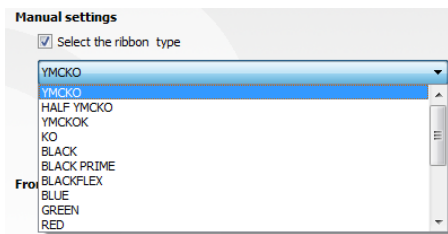


Figure 10: Manual settings



Please note that **Auto-Id** is unchecked when **Manual settings** is activated.

The **Front and Back side settings** section allows you to use different ribbon settings for each side of your card (Front YMCKO / Back KO, Custom front Color / back Monochrome, etc.) when printing in double sided mode.



This setting is only available if the flip-over module is activated in your printer (Primacy/Elypsa). By default, the driver properties are in Simplex mode.

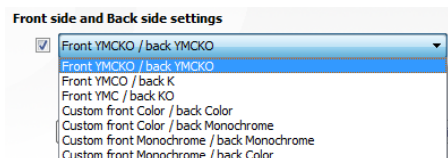


Figure 11: Front and Back side settings

3.2.4 Front side graphical settings

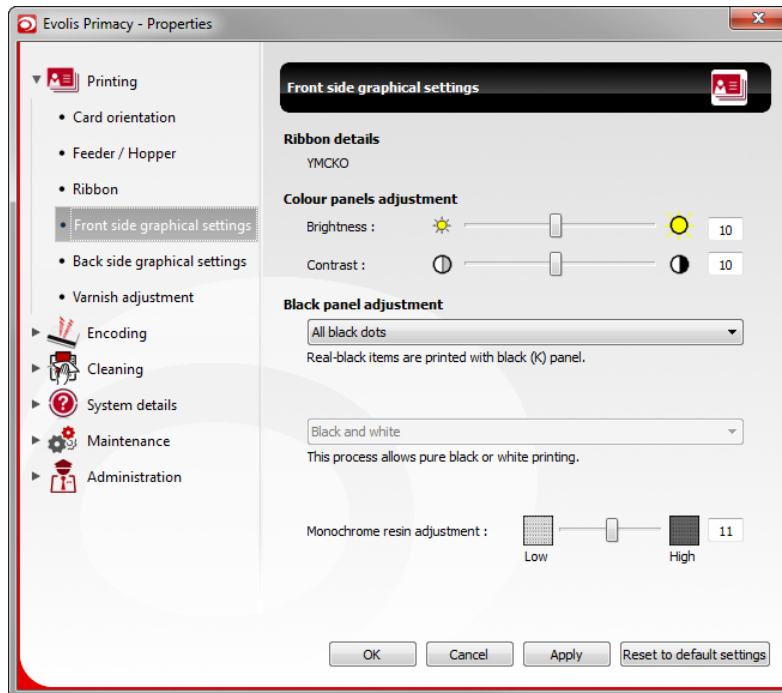


Figure 12: Front /Back side graphical settings

The Front side graphical settings menu allows you to:

- read the ribbon details,
- adjust the colour panels,
- adjust the black panel: according to the type of ribbon selected, you have access to one or two sub-section displayed.

a. Black panel adjustment for the color ribbons:

- All black dots: Real-black items are printed with black (K) panel.
- No real black printed: The YMCKO ribbon's black panel is not used during printing. All black elements on the card are printed using the yellow, magenta and cyan panels (composite black).
- Only black text: Black text fields are printed with black panel (K).

b. Black panel adjustment for the monochrome ribbons:

- Black and white: This process allows pure black or white printing.
 - Grayscale: This process prints in greyscale.
 - Dithering: Conversion of a colour image to one made up of dots. High resolution, low quality image rendering at distance.
 - Clustered dithering: Conversion of a colour image to one made up of groups of dots. Average resolution, good quality image rendering at distance.
- Monochrome resin adjustment:
 - This setting allows you to adjust the contrast of black panel (K).

3.2.5 Back side graphical settings

These settings are strictly identical to front side graphical settings, but they should be set-up individually.



This setting is only available if the flip-over module is activated in your printer (Primacy/Elypso). Adjustment of these parameters should be done step by step.

3.2.6 Varnish adjustments



This setting is only available if the ribbon contains an overlay panel.

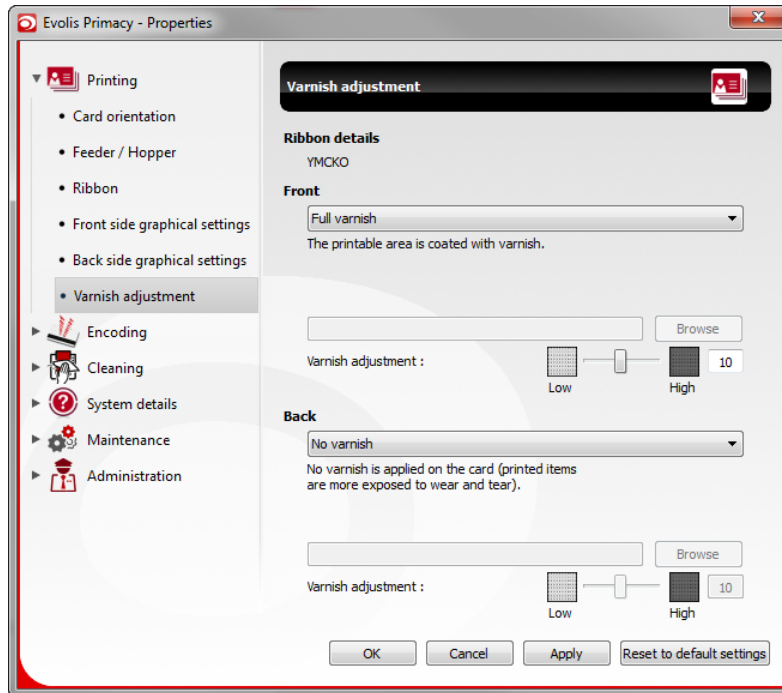


Figure 13: Varnish adjustments

The Varnish adjustments menu allows you to adjust the varnish coating on cards and where to apply varnish on cards. Varnish purpose is to protect card from UV and to increase resistance of cards to scratching.

Here is a list of all settings available:

- Full varnish: The printable area is coated with varnish,
- No varnish: No varnish is applied on the card (printed items are more exposed to wear and tear),
- Mag ISO bitmap: No varnish is applied on the magnetic stripe as specified by the ISO standard,
- AFNOR chip bitmap: No varnish is applied at the chip's location as specified by the AFNOR standard,
- ISO chip bitmap: No varnish is applied at the chip's location as specified by the ISO standard,
- Custom bitmap: The varnish is applied according to the selected picture (black area shows the varnish coating, white area gets no varnish).



The selected file has to be a monochrome bitmap file and its size should be 1016 x 648 dots.

3.3 Encoding

3.3.1 Magnetic

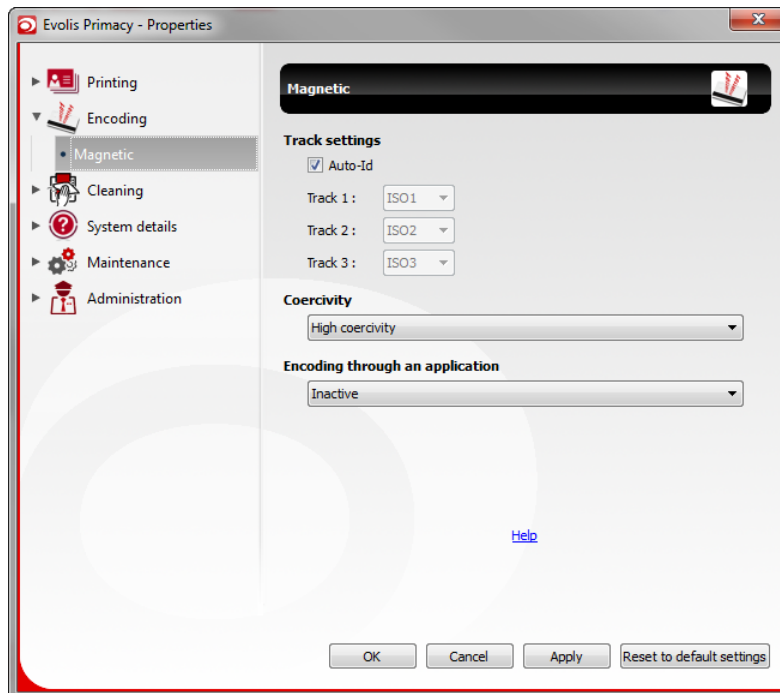


Figure 14: Magnetic

The Magnetic menu allows you to configure the magnetic encoding.

Track settings allow you to select the desired format for each stripe. The stripes can be configured in ISO, SIPASS, C2, JIS2 and C4 format.



See <http://www.evolis.com/eng/Drivers-Support/Product-support/Primacy/Online-help/999> for information on the ISO 7811 and JIS2 (Japanese Industrial Standard) standards.

Coercivity sets the magnetic encoding to high (HiCo) or low (LoCo) coercivity according to the magnetic cards used. A magnetic stripe that is encoded with high coercivity is more resistant to external disturbance than a magnetic stripe encoded using low coercivity. The cards must satisfy the coercivity level of the encoder: do not mix HiCo and LoCo.

Encoding through an application is used to encode magnetic stripe cards from applications under Windows (such as Word for example). A text field enclosed within “[” and “]” characters (or some other character which the user can define) will be interpreted as an encoding command by the print driver (e.g. [1DATA] encodes DATA characters on stripe 1).

3.4 Cleaning



The aim of these options is to maintain your printer in proper conditions. Be informed that cleaning operation is linked to your print head and printer warranty.

3.4.1 Cleaning details

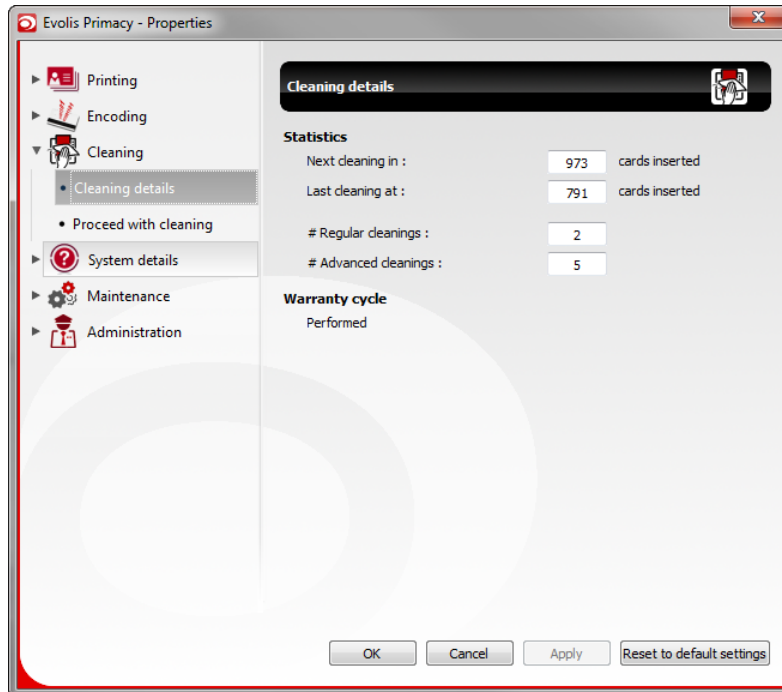


Figure 15: Cleaning details

The Cleaning details menu gives information about cleaning operations.

The counter shows how many advanced or regular cleaning you have done.

If you do not perform the regular cleaning after 1200 inserted cards, Evolis printer and print head warranty will be voided. Evolis also suggests you to perform advanced cleaning every 5000 inserted cards.

Warranty cycle lets you know if cleaning have been done on time to maintain your warranty.

For more help on this topic, visit: <http://www.evolis.com/>



Depending on your working environment and to the amount of printed cards, Evolis recommends you to do more frequent cleaning, for example, each time you change the ribbon.

3.4.2 Proceed with cleaning

The Proceed with cleaning menu allows you to start the Printer regular cleaning wizard or Printer advanced cleaning wizard.



The advanced cleaning is required every 5 regular cleaning. Evolis suggests you to perform advanced cleaning every 5000 cards inserted.

- Regular cleaning is a guarantee for optimal printing quality and protects the warranty of your print head and your printer.
It is performed using an Evolis High Trust adhesive card.
- Advanced cleaning is required to fully clean all transport rollers.
It is performed using a «T» shaped cleaning card and an Evolis High Trust adhesive card.

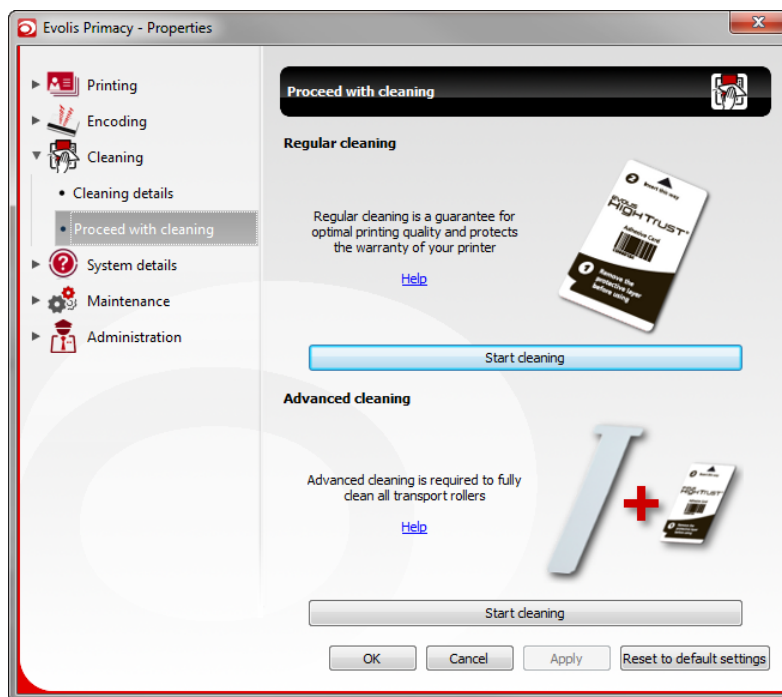


Figure 16: Proceed with cleaning



For more help on this topic, please visit:
<http://www.evolis.com/>

3.5 System details

3.5.1 Printer details

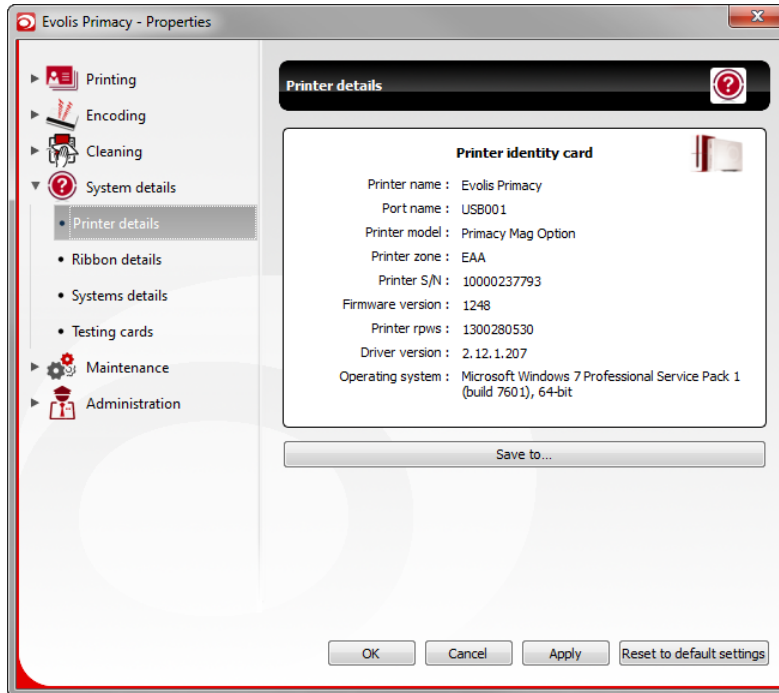


Figure 17: Printer details

The Printer details menu gives information about printer. This window offers the possibility to save information into a .txt file.

3.5.2 Ribbon details

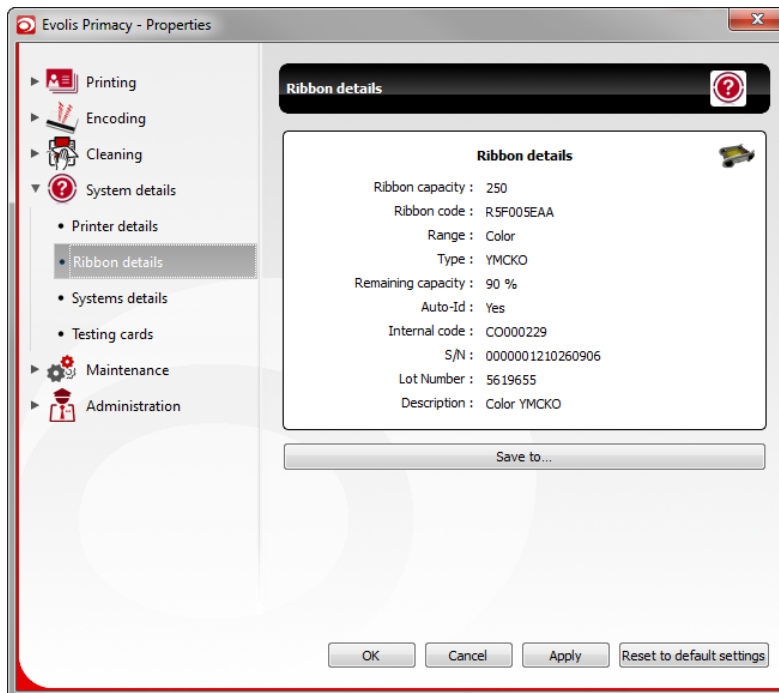


Figure 18: Ribbon details

The Ribbon details menu gives information about the ribbon currently installed in the printer. This window offers the possibility to save information into a .txt file.

3.5.3 Systems details

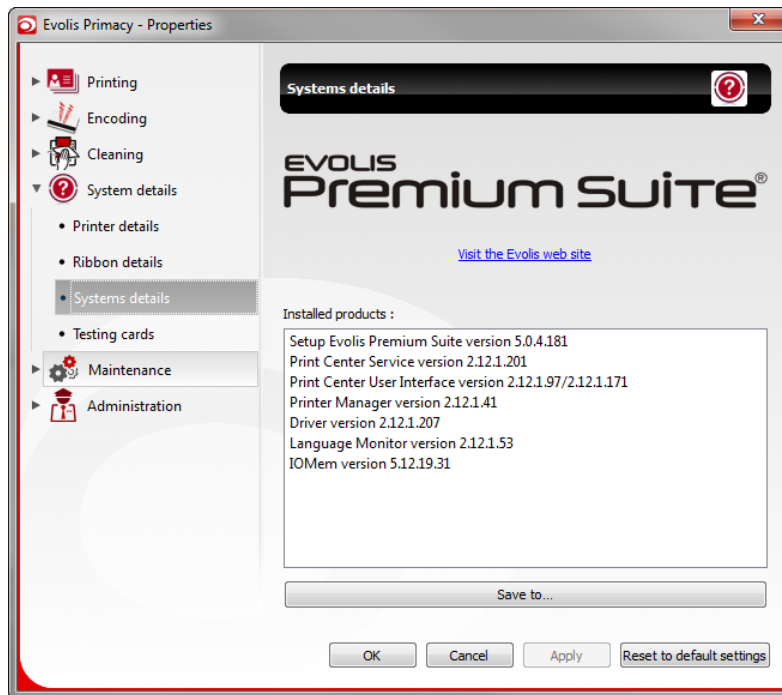


Figure 19: Systems details

The Systems details menu gives information about Evolis Premium Suite and software components. This window offers the possibility to save information into a .txt file.

3.5.4 Testing cards

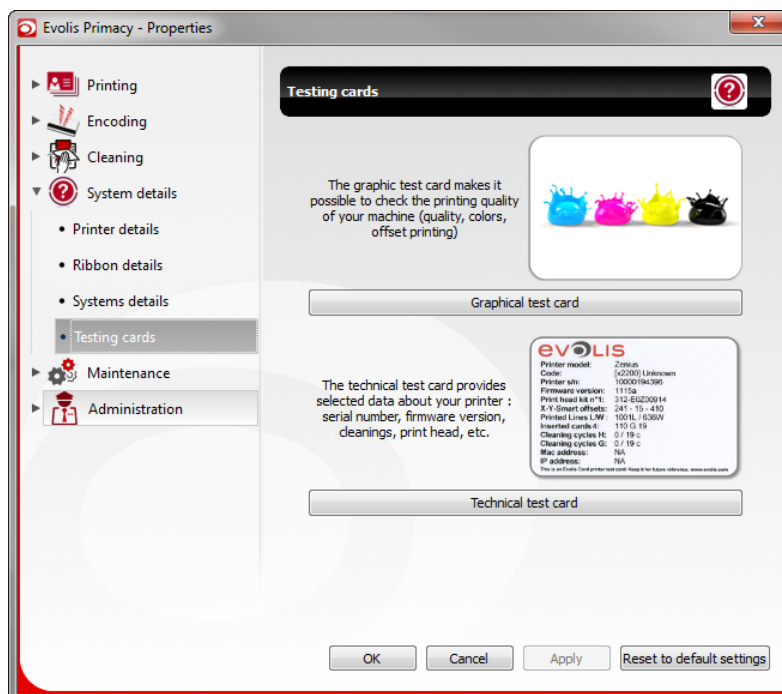


Figure 20: Testing cards

The Testing cards menu allows you to print two types of test cards:

- Graphical test card: This option allows you to check the printing quality of your machine (quality, colors, offset printing).
- Technical test card: The technical test card provides selected data about your printer: serial number, firmware version, cleanings, print head, etc. It is requested in case of problems during the print head warranty period. For any warranty claim, the technical test card has to be sent with the defective print head to Evolis Services.

3.6 Maintenance

3.6.1 Printer commands prompting

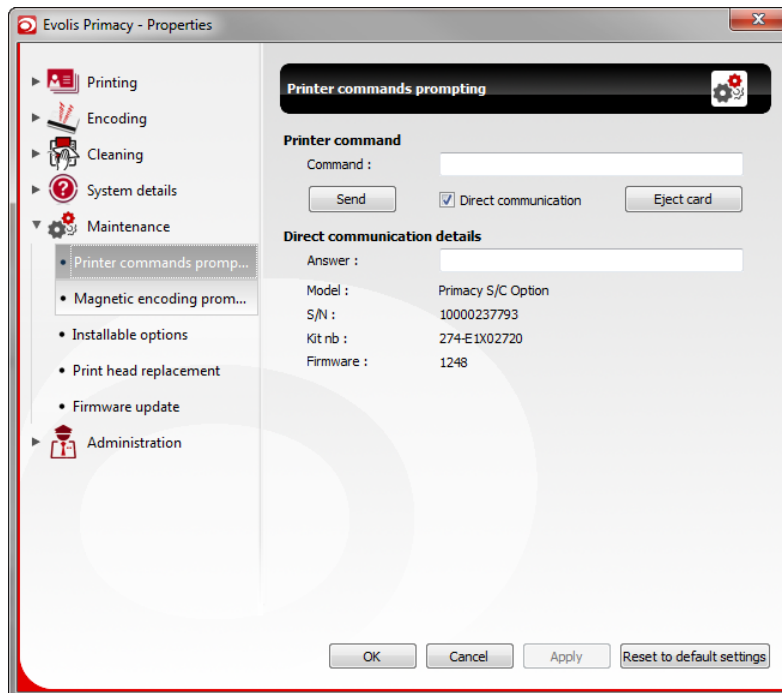


Figure 21: Printer commands prompting

The Printer commands prompting menu allows you to enter ESC commands in order to read and/or adjust settings of your printer.



This window allows a bidirectional communication with your printer using printer commands.



Sending ESC commands requires appropriate technical knowledge. Some orders may permanently change the proper working of your equipment.

3.6.2 Magnetic encoding prompting

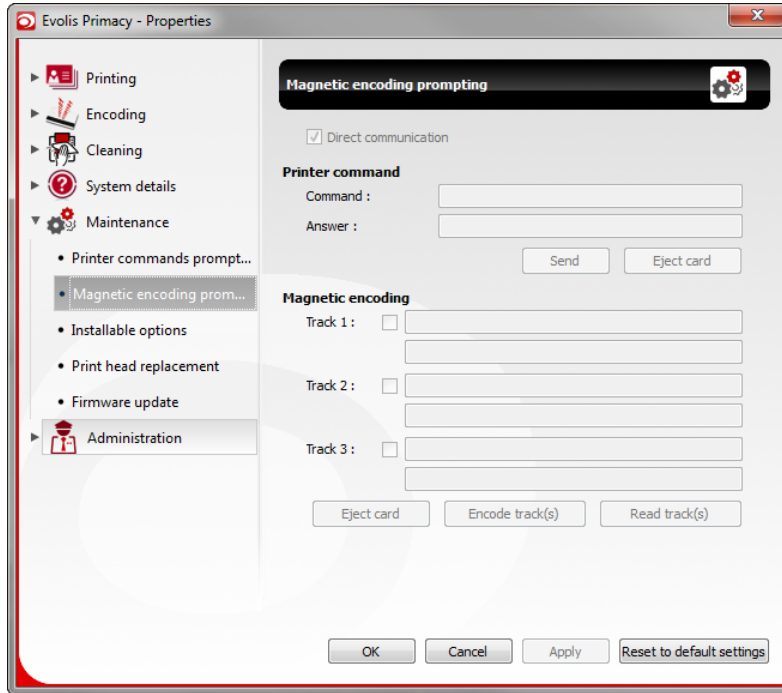


Figure 22: Magnetic encoding prompting

The Magnetic encoding prompting menu allows:

- to encode one or more magnetic track(s) by entering the data to be encoded.
- to read/write datas on the magnetic tracks.
- enter ESC commands in order to read and/or adjust settings of your magnetic encoder if necessary.

3.6.3 Installable options

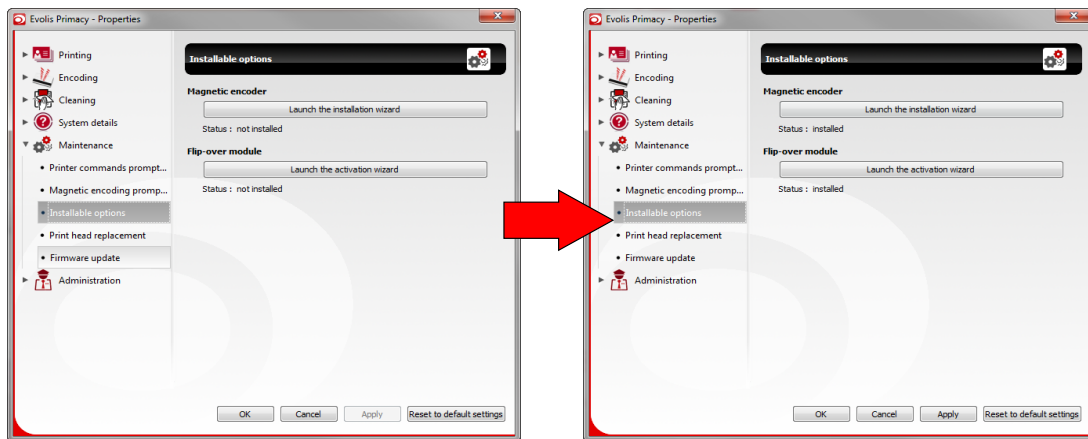


Figure 23: Installable options

The Installable options menu allows you to start:

- the Magnetic encoding module installation wizard,
- the Printer flip-over activation wizard,
- to check the statuses of these options.



When options are installed, check that statuses are modified.

3.6.4 Print head replacement

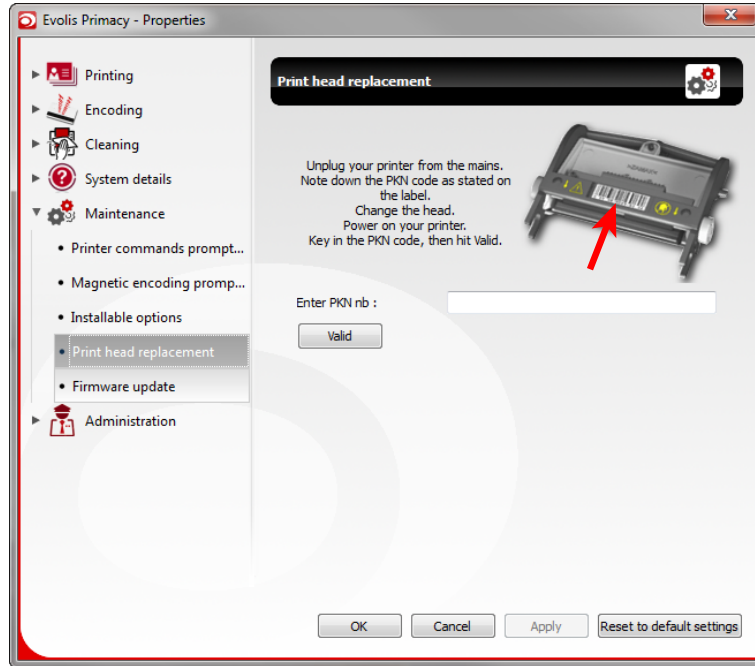


Figure 24: Print head replacement

The print head replacement menu allows you to set the new print head by sending the new print head serial number (PKN). The PKN number is located on the print head label.



This is a required operation allowing the head adjustment. If the new print head serial number is not validated, the print head and the printer can be damaged and warranty may be void.

3.6.5 Firmware update

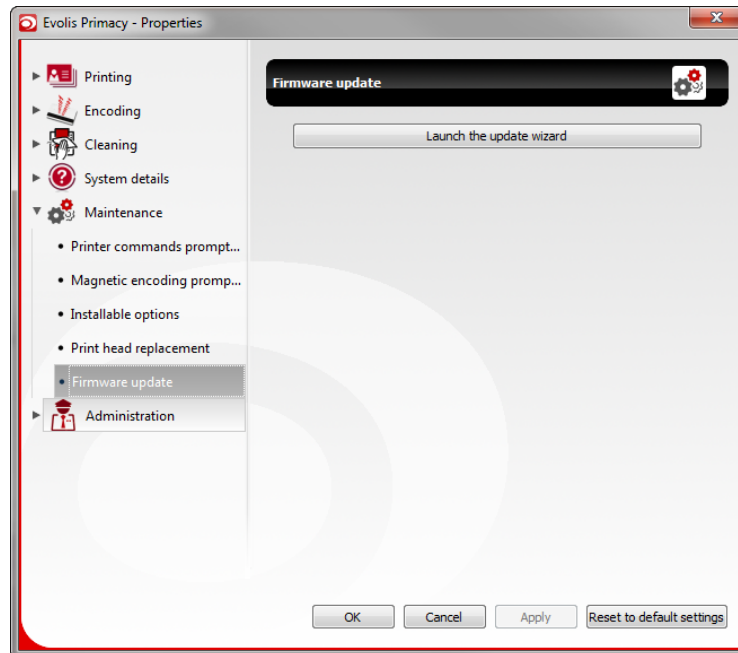


Figure 25: Firmware update

The Firmware update menu allows you to start the Printer firmware update wizard.



Mishandling (disconnecting the power or the data cable, etc.) when updating the firmware can damage your printer.

3.7 Administration

3.7.1 Standby settings

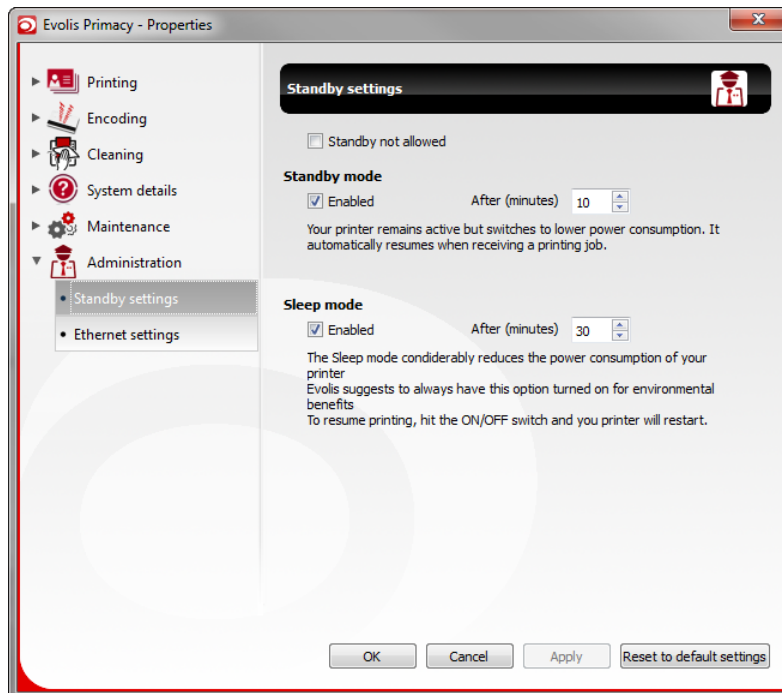


Figure 26: Standby settings

The Standby settings menu allows you define the time to enable/disable standby and/or sleep mode of your printer and to define them.

Comments:

- The default mode has been defined within the framework of the reduction of environmental impacts program. It minimizes the power consumption.
- Using this default mode is not compatible with operation in a customer-facing counter (time to wake-up) or remote control of printers (VPN) because there is no remote wake-up.

In both cases, you must disable sleep mode or standby mode.

3.7.2 Ethernet settings

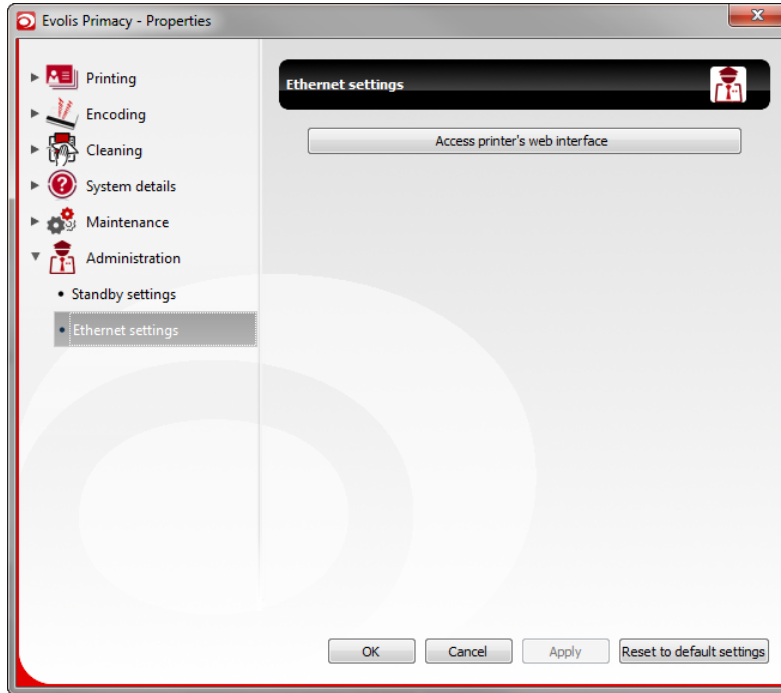
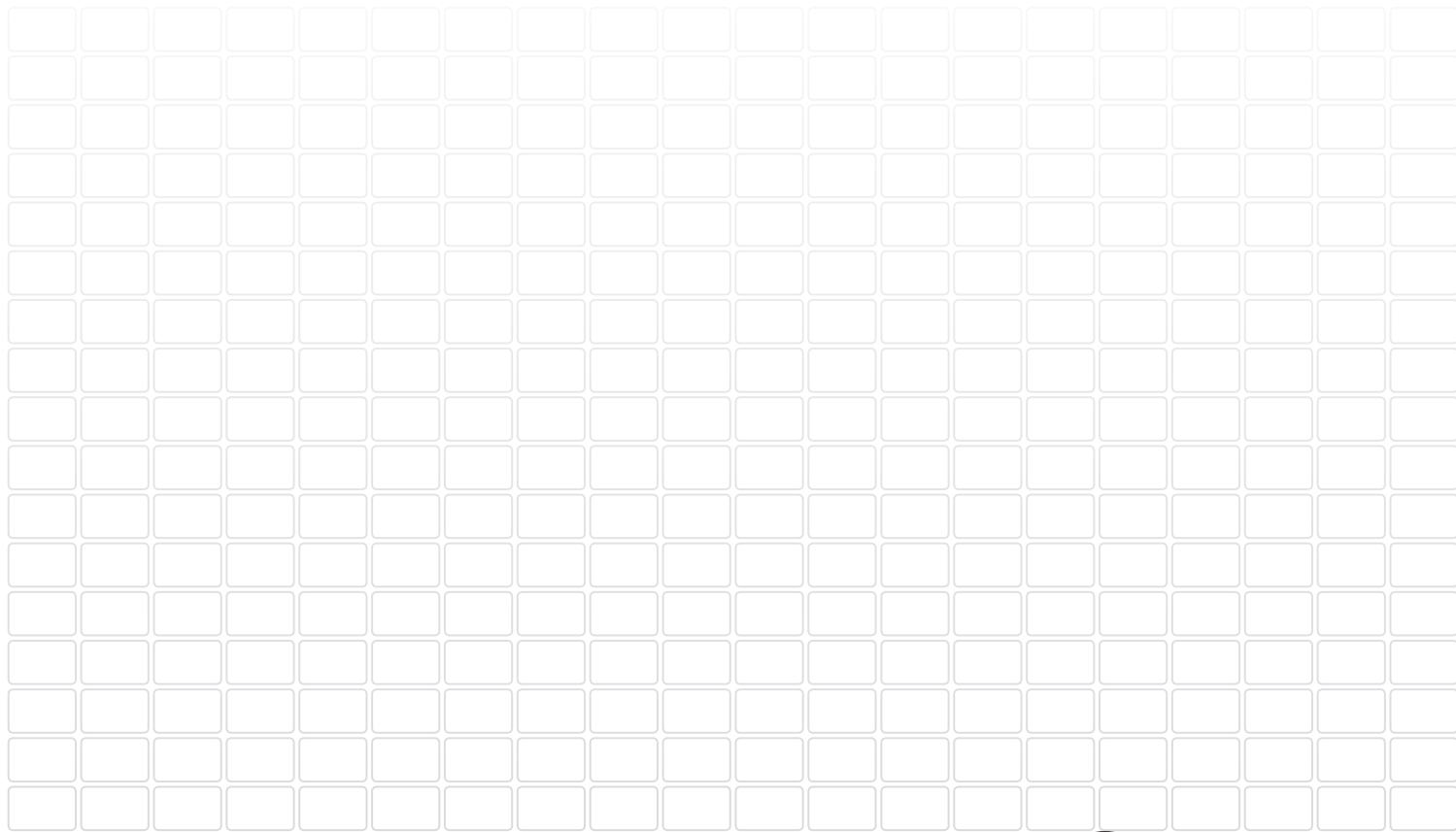


Figure 27: Ethernet settings

The Ethernet settings menu allows you to access to the printer's web interface. Evolis printers equipped with a TCP/IP network interface offer an embedded HTTP server. For more information on this topic, please download the Network Administrator Manual of your printer on Evolis website.

END OF MANUAL



Evolis Card Printer
Siège social
Zone Industrielle Angers-Beaucouzé
14, avenue de la Fontaine
49070 BEAUCOUZÉ
+33 (0) 241 367 606 T
+33 (0) 241 367 612 F
info@evolIS.com
www.evolIS.com