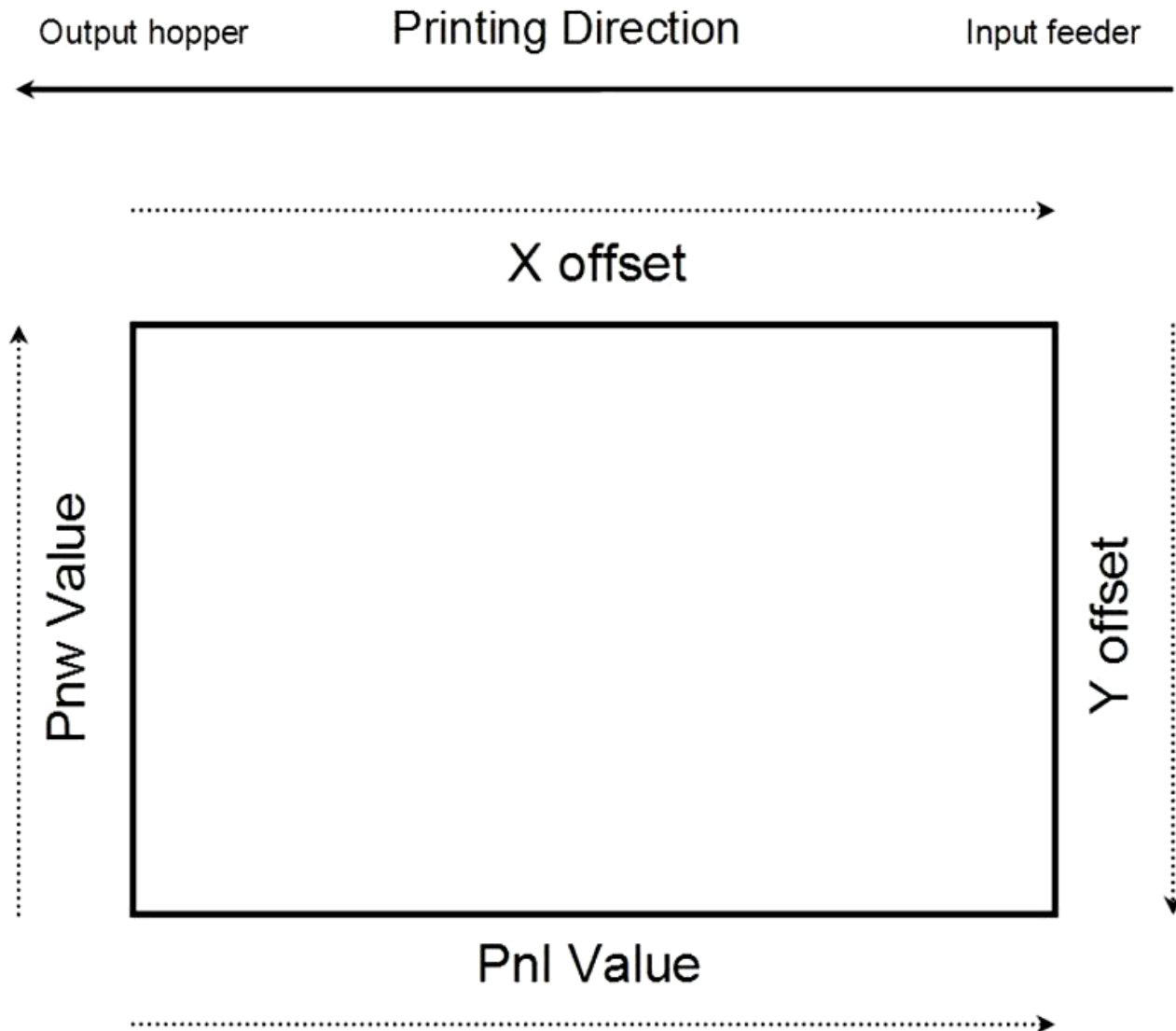




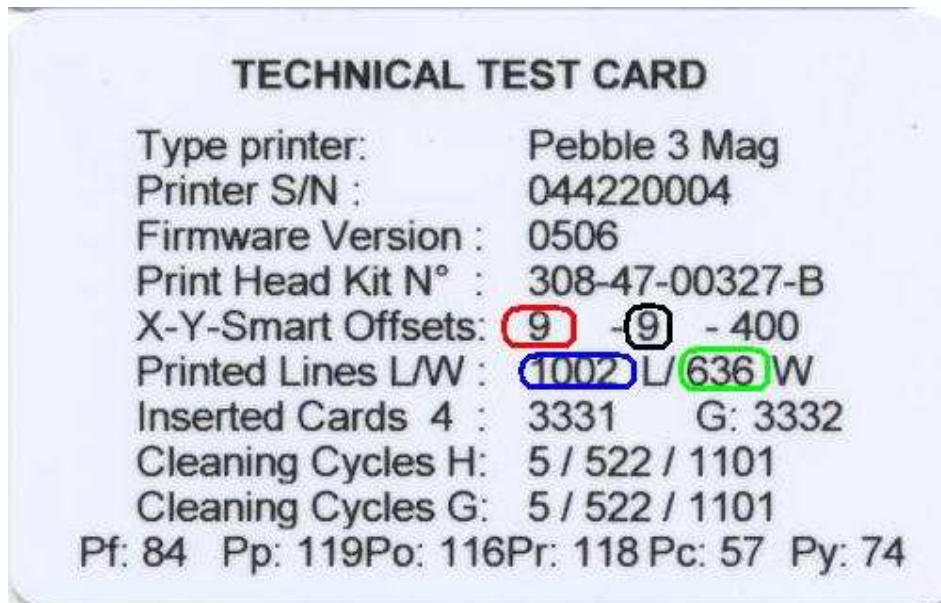
## Offset adjustment procedure Pebble 3-4 / Dualys 2-3 / Securion



## 1) Print a technical test card to get the offset default values:

In the **driver properties/Tools/Dialog with printer**, send the following command:

**Stt**



X offset value	Y offset value	Vertical printed lines	Horizontal printed lines
----------------	----------------	------------------------	--------------------------

## 2) Offset reading commands:

In the driver properties/Tools/Dialog with printer, send one of these commands:

**Ry** (Y offset value)  
**Rx** (X offset value)  
**Rnl** (vertical printed lines)  
**Rnw** (Horizontal printed lines)

### 3) Offset adjustment commands:

In the **driver properties/Tools/Dialog with printer**, send one of these commands:

**Px;=;Value** (Vertical printing start - Increase this value to move the design to the right of the card)

**Px;+;Value**

**Px;-;Value**

**Py;=;Value** (Horizontal printing start; increase this value to move the design to the bottom of the card)

**Py;+;Value**

**Py;-;Value**

**Pnl;=;Value** (Increase this value to increase the number of vertical printed lines on the right hand side of the card)

**Pnl;+;Value**

**Pnl;-;Value**

**Pnw;Value** (Increase this value to increase the number of horizontal printed lines on the top of the card)

### 4) Tips

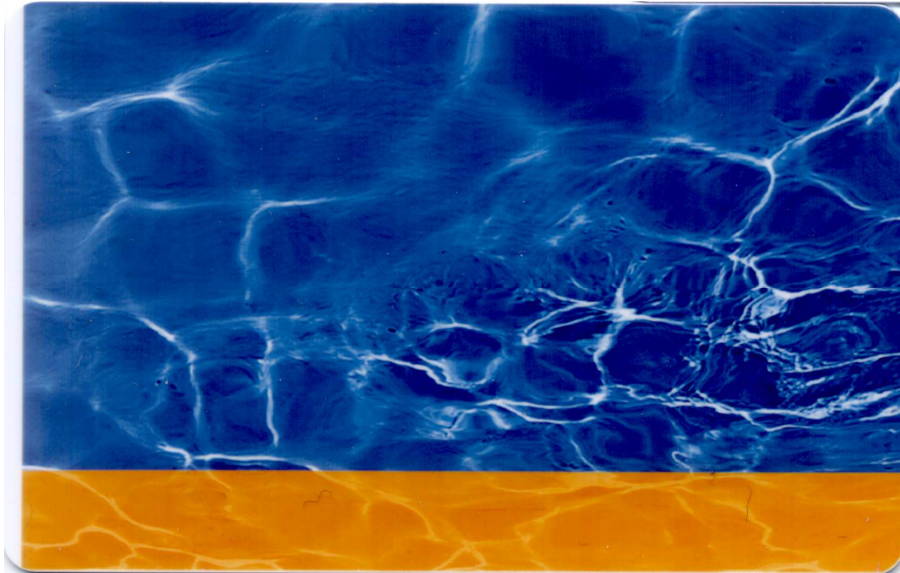
- Adjust the X offset before the Pnl value.
- To reduce the margin on the right side, increase the Pnl value one-by-one.  
→ Do not set it directly to the maximum value (1016).
- If you increase or decrease too much the Y offset value or the number of horizontally printed lines, you will see wrinkles along the edges of the design.
- If you reduce too much the X offset value, the printer will cut the ribbon or nothing will be printed on the card (because the print head starts to print before the card)
- The values are in dots (12 dots = ~ 1mm), so adjust them one-by-one.

## 5) Sample of adjustment:

Printing direction



Sample1:



- A white margin can be observed on the left of the card.

Solution:

Reduce the X offset to move the image on the left of the card (12 dots = ~ 1mm).

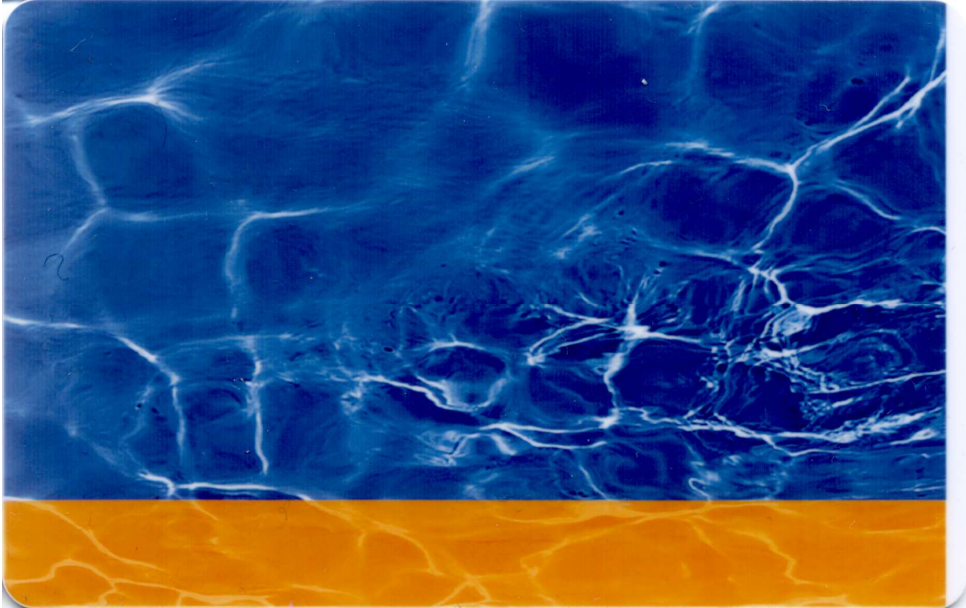
Commands:

**Px;=;Value**

**Px;+;Value**

**Px;-;Value**

Sample2:



- A white margin can be observed on the left of the card.

Solution:

Increase this value to increase the number of vertical printed lines on the right hand side of the card (12 dots = ~ 1mm).

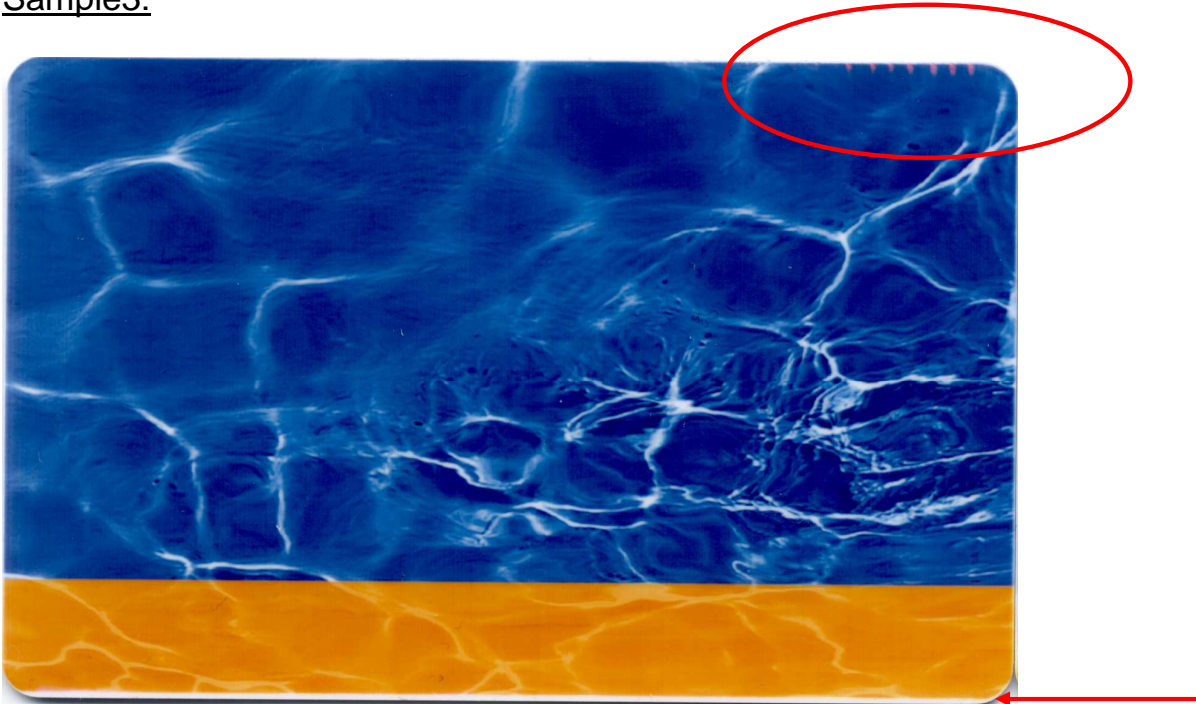
Commands:

**Pnl;=;Value**

**Pnl;+;Value**

**Pnl;-;Value**

Sample3:



- A white margin can be observed on the bottom of the card or/and wrinkles are on the top of the card.

Solution:

Increase the Y offset to move the image on the bottom of the card (12 dots = ~ 1mm).

Commands:

**Py;=;Value**

**Py;+;Value**

**Py;-;Value**