



eMedia v6
Evolis OEM version

TABLE OF CONTENT

© 2005 Evolis Card Printer. The content of this document is for informational use only. It is subject to change without notice and should not be considered as a commitment by Evolis Card Printer.

Evolis Card Printer assumes no responsibility or liability for any errors or inaccuracies that may appear in this documentation.

No part of this publication may be reproduced, stored in a retrieval system, or transmitted, in any form or by any means, electronic, mechanical, recording or otherwise, without the prior written permission of Evolis Card Printer.

Evolis Card Printer - 29, avenue de la Fontaine - Z.I. Angers Beaucouzé - F-49070 BEAUCOUZE

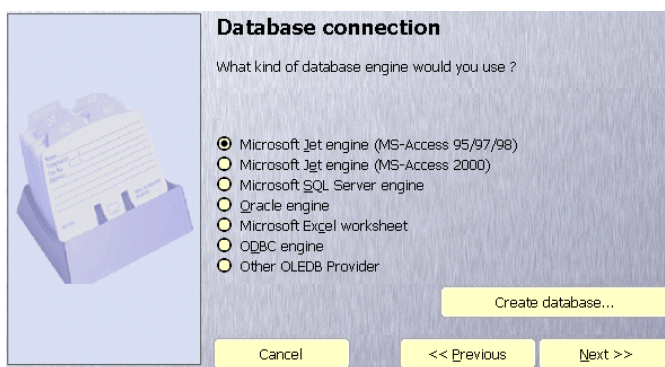
Advantages	1
Specifications chart	2
Check out the Professional or Expert version for free	3
Upgrade from Trial to Standard, Professional or Expert version	4
eMedia Card Designer migration tool	5

1. Advantages

Powerful, Convenient, Multifunctional, User Friendly and much more...

- ❶ eMedia Card Designer enables you to encode magnetic stripes, process smart cards, encode the MIFARE Contactless smart cards, produce an extensive range of barcodes, and offer all the features required to create and edit your cards and badges.
- ❷ eMedia features a Design mode and an Operating mode which is user-profile dependant.
- ❸ A Demonstration mode allows you to instantly activate the Professional and Expert versions so you have the opportunity to evaluate all their advantages.
- ❹ The current version can be quickly upgraded to the Professional or Expert version with an Activation Key (please refer to point #7 of this guide for information about the Activation key). The Professional version offers connections to databases and other advanced functions. The Expert version also allows you to encode the MIFARE Contactless smart cards.

Connection to any standard database:



- eMedia Card Designer has been designed to be connected to your company databases. If you don't have a database yet, eMedia Card Designer will help you creating one.
- To create your database connection, while in "Design mode", then select "Database connection" command in the "Tools" menu
- Formulas transform your card by allowing you to create powerful programmable objects.
- COM Server features allows you to integrate the eMedia software in your own applications.
- You may create your own Plug-ins to extend the software features.
- Selective printouts (batch printing) based on SQL command or range of values help you printing many cards at a time.

2. Specifications Chart


eMedia Specifications Chart		Standard	Pro	Expert
32 bits application	Runs under Microsoft Windows 9X, NT, 2000 and XP	✓	✓	✓
WYSIWIG environment	Eliminates the need to preview operations.	✓	✓	✓
Multi User Network	Many users can work on the same data through the network	✓	✓	✓
Task Division	The two modes of eMedia (design and operating) allow users to design cards while other users are editing cards	✓	✓	✓
Password-protected	Password prevent the users from modifying the design of the cards	✓	✓	✓
Multilingual	Chinese, English, French, German, Italian, Japanese, Portuguese and Spanish	✓	✓	✓
On-Line Help	An assistant guides you in your daily activities.	✓	✓	✓
Acquisition	Uses standard technologies (Twain, WIA)	✓	✓	✓
Picture format	BMP, JPG	✓	✓	✓
Imaging Tools	Direct link to your favourite image modification application	✓	✓	✓
Text	Use all Windows fonts, static and dynamic objects.	✓	✓	✓
Barcodes	More than 20 types included, static and dynamic objects	✓	✓	✓
Shapes	Lines, Diagonals, filled and transparent rectangles, circles and ellipses.	✓	✓	✓
Front & Back	Design both sides of the card.	✓	✓	✓
Programmable objects	Text, barcode and image can contain a calculation		✓	✓
Magnetic Encoding	ISO track 1, 2 and 3. Non-ISO tracks, JIS Type II. Eased programmable writing interface.	✓	✓	✓
Magnetic strip data source	System variables	✓	✓	✓
	Database fields, programmable values		✓	✓
Smart Card Encoding	Through any Smart card application	✓	✓	✓
Smart Card data source	System variables	✓	✓	✓
	Database fields, programmable values		✓	✓
Standard drivers	Printouts using standard Windows drivers	✓	✓	✓
Selective printouts	Based on SQL command, range of values or range of records		✓	✓
Standard databases	Connect to any standard database (Microsoft Access, Microsoft SQL Server, Oracle, ODBC compliant databases: Microsoft Excel, DB2, Sybase, etc.)		✓	✓
Data source	Database field values can be used in text, barcode and image object		✓	✓
Database	Create your database with eMedia Card		✓	✓
Image Storage	Path to image files acquired stored in database fields		✓	✓
Picture functions	Zoom, rotation, cropping included, image modification program linking	✓	✓	✓
Expressions programming	Wizard available to help creating powerful programmable objects		✓	✓
Mifare Contactless Cards (1)	Ability to print out the serial number and to store it in a database field			✓
	Encoding handled by the software			✓
	Encoding using an external encoding unit		✓	✓
	Memory Map design wizards			✓
CoolReader technology	A database record can be selected by reading the magnetic strip, a barcode or the Mifare serial number on the card		✓	✓
COM Server	Easily integrate eMedia in your own applications or documents. Control eMedia from your own program, or from a Microsoft Excel worksheet, a Microsoft Access application or an HTML page		✓	✓
Plug-ins	Extend the features of eMedia with third-party components		✓	✓

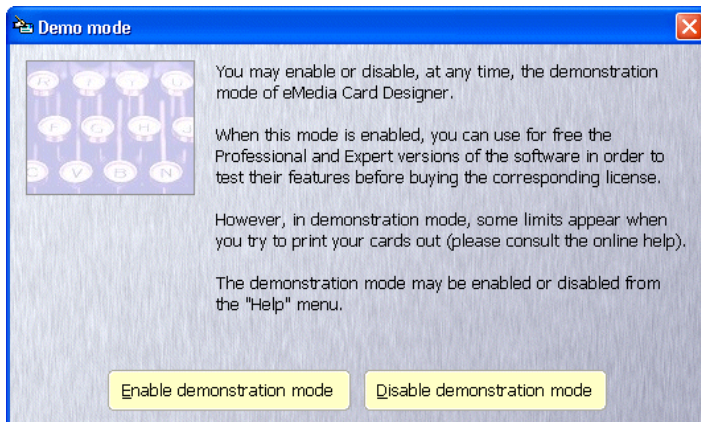
(1) Upon software compatibility with cards and encoding unit

3. Check out the Pro or Expert version for free!

Would you like to evaluate the Professional or Expert versions before buying it?
Of course you can!

Enable the demonstration mode from the Help menu, and eMedia Card Designer acts as an Expert version. All the features are enabled (but you will not be able to print).

1. Start eMedia Card Designer
2. Make sure you are in Design Mode
3. Click on the  icon and click "Enable demonstration mode".



Note that when the demo mode is enabled, a Demonstration (or Specimen) label will appear across the cards when printing out, and even if you can define the Contactless smart cards encoding, you will not be allowed to encode any card.



4. Upgrade from Trial to Standard, Professional or Expert version

During the installation of the eMedia Card Designer software, all the features are integrated, but are disabled, and only those available to Trial or Standard versions can be used. To enable the advanced functionalities, you'll have to enter an Activation Key.

5.1- Get the Installation key

The Installation key is a string of characters, automatically generated by the software during installation. This key can be found by:

1. Starting the eMedia Card Designer Program
2. Opening the "Help"
3. Selecting the "**Register your license...**" command

5.2- Get your License key

Order the required version (Standard, Professional or Expert) to your local reseller. He will return you a License Key.

5.3- Get your Activation key on the internet

If the computer can access to the internet, enter your personal/company information in the dialog box from the "Register your license" command of the "Help" menu. Your Activation Key will be sent to your own e-mail address.

Or,

Connect to the <http://www.emedia-cards.com> internet web site and browse the registration section.

Enter your keys and your personal/company information (please read carefully our privacy statement)

Enter your e-mail address and submit the forms. Your Activation Key will be sent to your own e-mail address.

5.4- Enter your Activation key

Once you get the Activation Key, enter it in the "Register your license" dialog box. You have now a Professional or Expert version activated for this computer only.

Example:

Installation key	<input type="text" value="IK-XG9PA-56887-A87L3"/>
License key	<input type="text" value="LK-EVLP-0AF51T"/>
Activation key	<input type="text" value="AK-PG227-BC694D-H5F87"/>

Since you will receive an e-mail regarding those keys, please make sure you print and save it, and keep it stored in a safe environment. Without those codes, you would not be able to restore your eMedia license if any trouble occurs in your computer (disk crash, operating system troubles, etc.).

5. eMedia Card Designer Migration Tool

Activation key is only valid for the computer which supplied the Installation Key.

The migration tool helps you to transfer your eMedia Professional or Expert license from a workstation to another one. **You must use it also if you plan either to format the hard disk, or upgrade the Operating System.**

This migration tool turns back your version into an initial basic version, and provides you with a "Migration key" that will give you the ability to obtain by yourself, free of charge, a new activation key matching with the registration key of your new computer.

Launch eMedia, open the "Help" menu and select the "Migrate your license"

The Migration tool will also be started up if you remove eMedia Card Designer from your workstation from the Control Panel.

Example of migration key

MK-XJM23-KG547-DD6L3

Please make sure you copy this Migration Key on a document, and keep it stored in a safe environment. Without this code, you won't be able to re-activate your eMedia license anymore.